



Wycliffe

International Prospectus



*Inspiring  
young minds*



*An outstanding learning  
environment, like no other.*  
**Where personalised experiences  
will inspire your child to write  
their own story.**



**Christian San Jose**  
Head of Wycliffe College

**For over 140 years, Wycliffe College has been expertly helping children write their own stories of challenges faced and opportunities seized.**

The pages of this Prospectus will, we hope, give you a sense of the purpose, aspiration and all-round nature of a Wycliffe education; we call it the “Wycliffe Way”.

As parents, like me, you will want your children succeed academically, discover their interests, develop their passions, and grow in self-confidence. And I hope you will want them to be able to celebrate their own backgrounds and origins whilst understanding the cultural contexts of others.

A Wycliffe education is about much more than just a number of academic lessons delivered in the classroom and instead involves the development of the whole person. And whilst we are a forward-looking, diverse community, situated within a beautiful and accessible part of the English countryside, we also deliver an education based on the timeless values of respect, service and kindness.

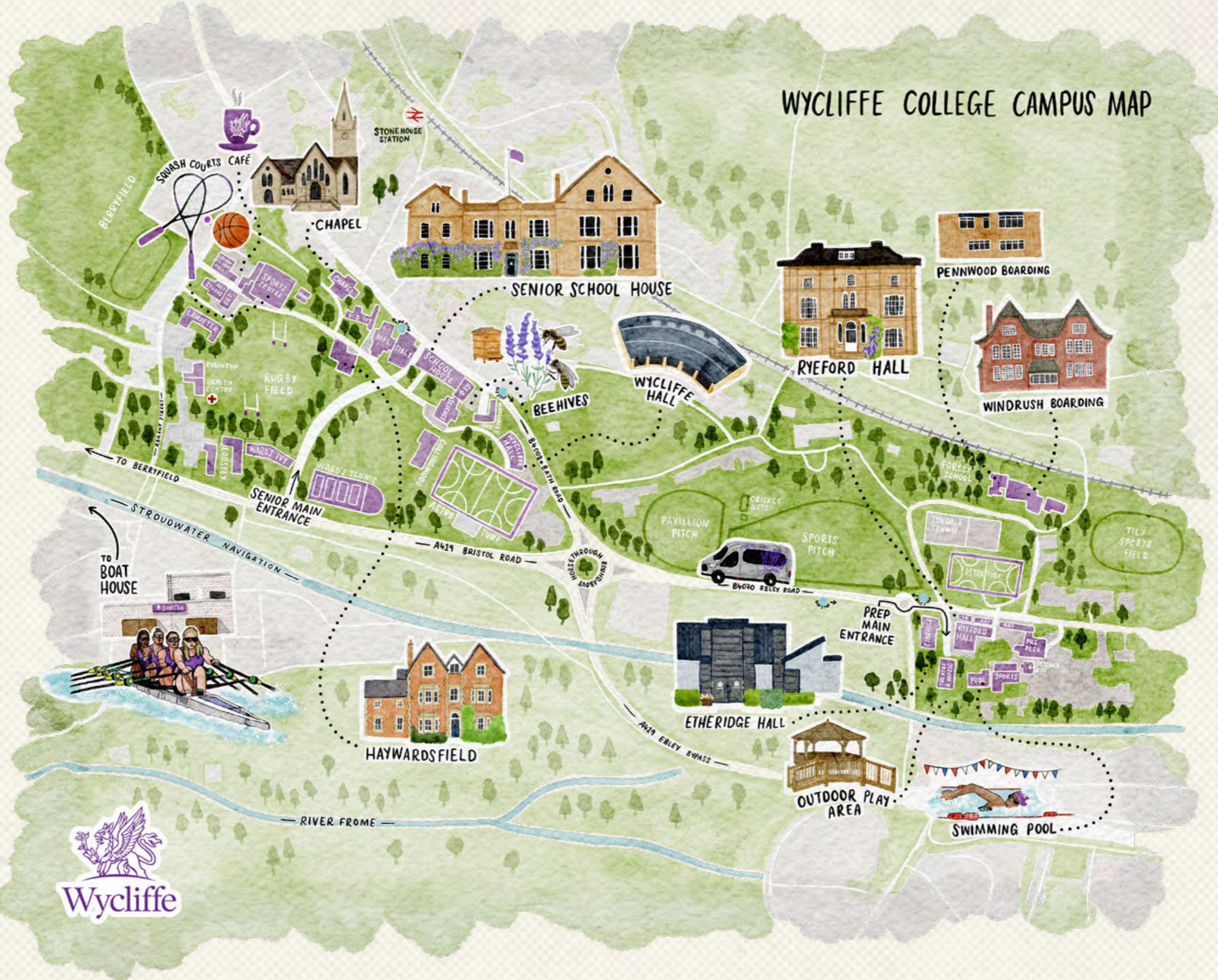
We have welcomed international pupils to our community for over 20 years and boarders from over 30 different countries now make up about a third of our pupil body. They join a wonderfully vibrant and diverse group of young people drawn from the local area and from across the United Kingdom. I am confident that your sons and daughters will make friends here that will enrich their educational and social lives not just whilst at Wycliffe but far into the future.

**I look forward to welcoming you to our wonderful school.**



8	Welcome to Wycliffe
10	Our Stunning Location
12	Life at Wycliffe
14	Our Houses
16	Prep Boarding Houses
18	Senior Boarding Houses
22	Our Purpose, Our Vision
24	Embracing Global Citizenship
26	Developing Rounded Individuals
28	Sport
30	Prep School
32	Years 3 to 6
34	Years 7 to 8
36	Senior School
40	Years 9 to 11
44	Pre-A Level Development
46	Sixth Form
48	The Careers Department
50	Life Skills
52	Scholarships
54	Application Process

# WYCLIFFE COLLEGE CAMPUS MAP



Wycliffe

# Welcome to Wycliffe College

Education is about more than just a number of academic lessons delivered in the classroom and instead involves a school being concerned about the development of the whole person

We are delighted that you are considering Wycliffe College for your overseas education.

Wycliffe College has welcomed pupils from around the world for over 20 years. Our success is based on our experience, understanding of pupils' needs, and an equal focus on academic success and pastoral support.

As a whole, Wycliffe is a thriving, non-selective, co-educational Day and Boarding school (ages 3 to 19) set within the heart of the Gloucestershire Cotswolds. It comprises a Prep School (from the Nursery Class up to Year 8) and a Senior School (Years 9 to 13), and is referred to as 'the College' when being considered as a whole.

Wycliffe has several defining characteristics that we think are very important: we are a lovely size, being big enough (c. 630 pupils: 200 in the Prep School and 430 in the Senior School) to have great facilities and yet small enough to truly know and recognise every individual.

In the Senior School, we enjoy a 50/50 balance between Boarding and Day pupils, which creates a real richness of peer groups with two-thirds of the College from the UK and one-third from 30+ different countries around the world.

We offer an incredibly wide range of academic subjects (especially with 20+ A Levels and 3 different BTECs/CTECs in the Sixth Form), allowing every individual to find their own academic pathway but also allowing very different siblings to thrive within the same institution.

To get a broad understanding of Wycliffe, our recently redefined 'Vision Statement' expresses the very reason that our founders, in the late 1800s, named us after the 14th-century theologian John Wycliffe:

**'... Wycliffe will promote a pioneering spirit and encourage individuals to flourish and embrace their futures as global citizens ...'**

Now, as always, a pupil's time at Wycliffe must be an 'experience' in itself – something to be enjoyed and valued for its own intrinsic value and not just a means to an end of walking away with some exam results.

Lastly and perhaps most importantly, our pupils will benefit enormously from being around each other, often without realising it. Our community is diverse, positive, inclusive and forward-looking. The friends that pupils make will enrich their educational and social lives not just here and now but will also be amongst their friends for life for the future.

**We hope that you are excited about your journey into the UK education Boarding experience, and we look forward to personally welcoming you to Wycliffe.**



We are based in the Cotswolds in a rural setting within a small village, Stonehouse. We have lots of stunning countryside, with wonderful views around the College.

The 52-acre campus comprises three main parts: the Senior School, the Prep School and The Berryfield (the main Senior School sports ground, located two minutes from the Senior School).

We are just 40 minutes from Bristol, 1 hour from Bath, and 100 minutes from London. Stonehouse Train Station is just a 3-minute walk from the Senior School, with a direct line to London Paddington.

The majority of pupils arrive at Heathrow Airport, but other airports are convenient to the College.

Stonehouse is a small, safe and friendly village with several shops and other services. In the Senior School, pupils have access to the local shops, with permission from their parents and House Parents.

If pupils are in the Senior School and want to purchase clothes, they would most likely join one of the shopping trips or go independently to Bristol, which has a large shopping mall. All the facilities and Boarding Houses are on campus, so you do not need to leave the safe environment in which we are located.

The Prep School and the Senior School are just a five-minute walk away from each other.

# Our Stunning Location



# Life at Wycliffe



Your House is your home during your life at Wycliffe. The House system provides every pupil a place to call their own at College, and where they can work and socialise. Wycliffe's approach to pastoral care is holistic and revolves around our House system, which fosters an immensely powerful and strong sense of community.



Pupils work well together, make friends easily and thrive in our nurturing environment



The Housemaster or Housemistress cares for you in your House and is a constant thread during your life at Wycliffe. Pupils can talk to their Form tutors, the on-site medical staff and the College Chaplain, who are always there if they need them. The Matron is the main presence in the Houses during the day and is always on hand to welcome you into the House at break times, lunchtime and the start and end of the day.

The communication between parents/guardians/agents and staff is a key strength of what we do. Our tutors ensure that they talk to parents/guardians about achievements and concerns as each week progresses, as well as sending regular reports home.

Life at Wycliffe is a happy one. Pupils work well together, make friends easily and thrive in our nurturing environment.





# Our Houses



In the Prep School, we have one Boarding House for boys and one for girls. Each is similar in size and the facilities that they have. Joining the two Houses is a social space that boys and girls can enjoy together.

In the Senior School, we have eight Houses: seven are Boarding Houses and there is one Day House.


Each has its own character and celebrates the diversity of its pupils. There is a strong sense of family with Seniors supporting and 'buddying' younger pupils. That feeling of belonging and embracing diversity is evident in all the House Competitions, whether it is House Song, Quiz Night, or Sports Day.

Each House has an accessible room for those pupils who need mobility support.

Pupils can decorate their bedroom with photos, posters and accessories to make it feel homely. Some pupils bring bed covers, but all bedding is provided. Rooms are cleaned daily and all laundry is done for the pupils, although we encourage Sixth Form pupils to wash their own leisure clothes, and all pupils have access to a washing machine and tumble dryer.

Each House has a range of spaces and facilities for pupils to enjoy. They have a large kitchen/dining space, games room, lounge, music room and sauna.

Whilst we cannot guarantee which Boarding House you will be allocated; we consider your preference and will place you in the House that we feel is right for you.

Read more about Full, Flexi and Day Boarding from age 7



There is a strong sense of family with Seniors supporting and 'buddying' younger pupils



# Prep Boarding Houses



Read more about Full, Flexi and Day Boarding from age 7

## Pennwood

This House is home to 35 boys. The bedrooms sleep between 4 and 5 boys in each and have good space for pupils to have all the belongings that they need. There is a large kitchen/dining room, games room and plenty of outdoor space for games and sporting activities.

## Windrush

This House is home to 35 girls. The bedrooms sleep between 4 and 5 girls in each. There is space for the pupils to place their photos and pictures and make their space feel like home. There is a large kitchen/dining room, games room and plenty of outdoor space for games and sporting activities.





# Senior Boarding Houses



Read more about Full, Flexi and Day Boarding from age 7



### Ivy Grove

Situated in the new Ward's-Ivy Grove building, this award-winning facility opened in 2017 and is home to 40 girls. The majority of the rooms are single en-suite.

### Lampeter

Is the best of both worlds – a beautiful Victorian building significantly extended in 2012 and it is home to 40 girls. The majority of the rooms are twin en-suite. The House has a wonderful rooftop garden overlooking the central part of the grounds.

### Robinson

A Boarding House full of energy and enthusiasm. Home to 70 boys, the modern building is situated close to the sports field. All rooms are twin en-suite.



### Ward's

Home to 45 boys, Ward's is located within the award-winning, nationally recognised Ward's-Ivy Grove House, which opened in 2017. The majority of the rooms are single en-suite. There is a lovely outdoor BBQ area and a sauna in the House.

### Loosley Halls

A home for Years 11, 12 and 13. Loosley Halls is home to 60 boys and girls in three separate Houses, with a central outdoor quad with great outdoor facilities. All of the rooms are en-suite.

### Collingwood

Is home to Day pupils from Years 9 to 13 where they have their own desk, cupboard and shelf space in a room with around 6 pupils.

### Haywardsend

This beautiful 18th-century building is home to 35 girls, both Day and Boarders from across all year groups.

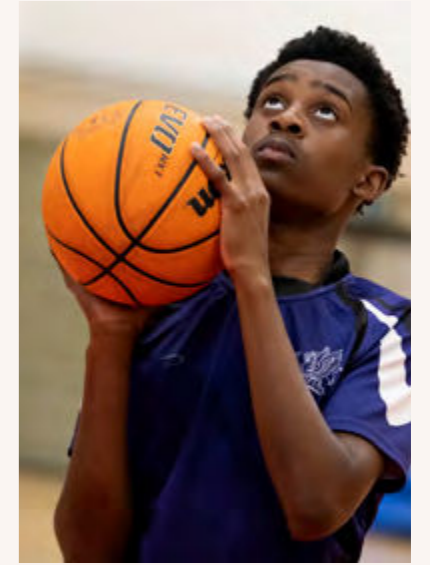
### Haywardsfield

This is Wycliffe's oldest Boarding House; situated at the heart of the campus and is home to 50 boys. There is a sauna in the House and a good-sized lounge and games room.





A vibrant school life from  
Prep to Sixth Form



Each pupil is  
truly known  
and valued



Our Curriculum is  
one of the best in  
the country



# Our Purpose

Inspire and educate every individual in mind, body and soul.

# Our Vision

Wycliffe will promote a pioneering spirit and encourage individuals to flourish and embrace their futures as global citizens.



1. Achieve their full academic, spiritual, physical and creative potential.
2. Behave with unassuming confidence, showing generosity of spirit, respect for others and appreciation of diversity.
3. Cultivate social and environmental awareness and an understanding of their role as global citizens.
4. Develop skills, self-knowledge and resilience to positively face all future challenges.
5. Exhibit creativity, innovation and independence in their approach to learning and to life.
6. Feel happy and secure.



# Aims for our Pupils

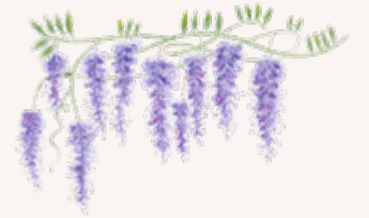
*Write your own story...*



# Embracing Global Citizenship

Bold & Loyal  
1882....

Wyclif

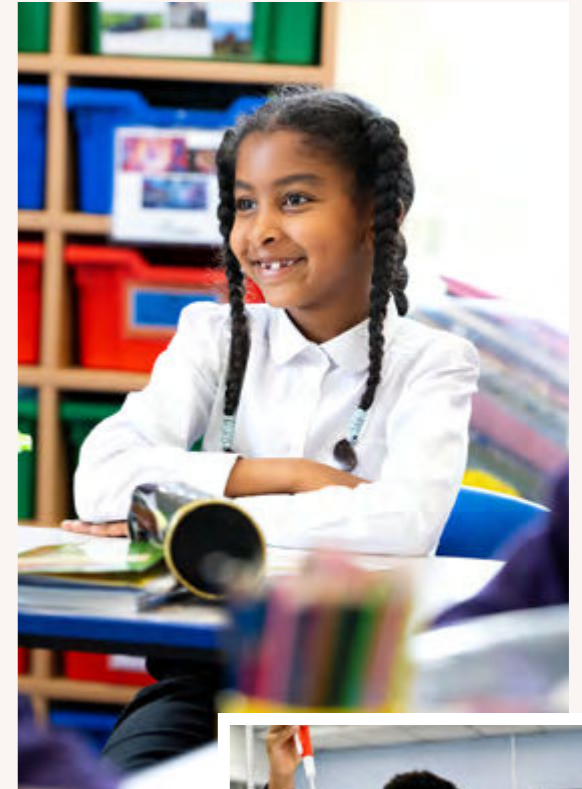


We prepare our young people to succeed and find their passions in an increasingly interconnected world. At Wycliffe, we aim to do this by embracing the College vision of promoting a pioneering spirit and encouraging individuals to embrace their future as global citizens.

Cultural diversity is an important part of the Wycliffe experience and crucial to our pupils becoming true global citizens. Around a third of our pupils are International, which allows us to share and learn from each other's cultures. At the same time, to become a positive citizen of the world, it is vital to understand our environment and culture.

As a Round Square School, Wycliffe is part of Round Square's internationally diverse network of 250 like-minded schools in 50 countries on 6 continents. These schools inspire pupils to become future leaders and custodians of our planet, and importantly share a commitment beyond academic excellence in terms of personal development, responsibility and understanding through service, challenge and adventure.

We are developing a unique curriculum that includes facets of the six IDEALS or 'pillars' that make up the Round Square continuum (**I**nternationalism, **D**emocracy, **E**nvironmentalism, **A**dventure, **L**eadership and **S**ervice) and these align neatly with Wycliffe's values. They provide an opportunity to work in collaboration with schools across the world and every pupil will take part in a Round Square collaboration every year.



## Pioneering Spirit

The concept of pioneering spirit encompasses all that education is about – challenging yourself, working collaboratively, getting through tough times and sometimes falling over, dusting yourself off and carrying on.

We promote a pioneering spirit by developing critical thinking, enhanced through opportunities in problem-solving and considering perspectives, all while shaping a love of learning.



# Developing Rounded Individuals

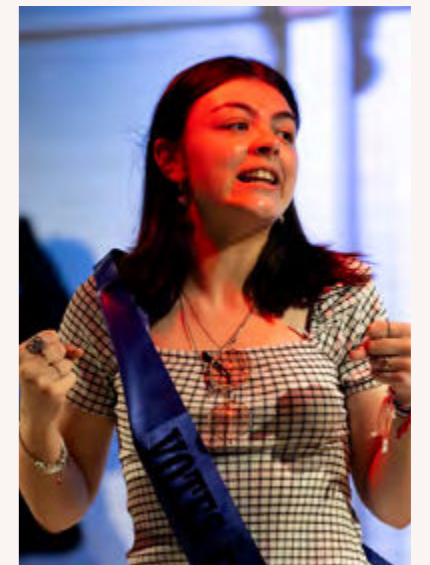
The Wycliffe experience is more than what happens in the classroom. We nurture mind, body and soul through our diverse extra-curricular programme.

We offer a wide range of activities and clubs, from traditional skills such as Beekeeping and Chess to the 21st-century topics of Cryptology and Esports. Getting involved in extra-curricular activities is considered important, not least because universities and future employers want people who have broad skills and experiences which are not purely academic. With more than 60 activities running every week of the year, you can stretch that pioneering spirit and try something you may never have considered before.

Your choices are organised with your tutor, who will monitor your attendance and progress. There is a lot on offer, and you should be able to find something that you enjoy and find rewarding.

The following activities are offered (but are subject to change):

- Art
- Basketball
- Beekeeping
- Brass Groups
- Ceramics
- Cookery
- Charities Committee
- Choir
- Chess
- Chinese
- Combined Cadet Force
- Creative Writing
- Cryptology
- Debating
- Design Technology
- Duke of Edinburgh Award
- Esports
- Fiction Addiction
- Film Appreciation
- Gardening
- Investment Club
- Italian
- Jazz Combo
- Literature Extra
- Mandarin
- Model United Nations
- Orchestra
- Philosophy for Life
- Photography
- Pottery
- Raspberry Pi
- Robotics
- Running
- Science
- Scrabble
- Sewing
- Strength and Conditioning Training
- String Group
- Pupil Magazine
- Supervised Fitness
- Swimming
- Table Tennis
- Ten Tors Expedition
- Theatre Trips
- War Gaming
- Wind Groups
- Wycliffe Youth Theatre
- Voluntary Work
- VOX
- Young Dragons
- Young Enterprise



Leadership, looking after others and being part of a team are essential aspects of life at Wycliffe. As pupils move through the Schools, we encourage every individual to take on a role supporting others in pastoral, academic or sporting activities. Learning to be a responsible young adult that cares for your community is part of a Wycliffe education.

# Sport



Sporting opportunities for all pupils are provided at every level throughout the College. Pupils of all abilities are encouraged to develop their physical potential and develop their pioneering spirit.

The College has an outstanding reputation for many sports including Rowing, Basketball and Squash, with pupils coming from around the world to be part of our successful teams. In our elite sports, pupils will have one-to-one coaching and physiotherapy sessions, and compete at local, regional, national and international levels.

Our Prep School has a 20-metre indoor swimming pool, which pupils at the Senior School can also use. Other facilities include glass-backed Squash courts, a Cricket pitch, a gym, a multi-use sports hall and astro turf pitches.



Read more about Wycliffe sports training



There are many sports available including:

- Aerobics
- Athletics
- Badminton
- Basketball
- Cricket
- Cross-Country
- Cross Fit
- Equestrian
- Fencing
- Football
- Hockey
- Netball
- Polo
- Rowing
- Rugby
- Squash
- Table Tennis
- Tennis
- Volley Ball
- Yoga





# Prep School

Wycliffe Prep School educates boys and girls aged 3 to 13. Founded in 1928 as a Prep School to Wycliffe College, the School aims to provide an all-round education with an emphasis on creating an environment where they are safe and happy.

Children may Board from Year 3. There is a full weekend programme, with regular trips and activities.

In each subject, the curriculum offers the best rigour and challenge, to develop each pupil for the next stage of their education. Based largely on the National Curriculum, pupils are given a firm foundation, preparing them for the early stages of GCSE.

The College's **CReSTeD** accreditation recognises the way we develop the skills of our pupils with specific learning difficulties.

Wycliffe Prep School has outstanding facilities including Tennis courts, astroturf and extensive games pitches. On campus, there is a fantastic Studio Theatre, a small gymnasium and an indoor swimming pool. We have frequent access to the Sports Centre at the Senior School and encourage the children to use these facilities for Badminton, Squash, Basketball and Cricket. For Lower Prep pupils, there is also the Donald Clark Adventure Playground, an exceptional, state-of-the-art classroom block (intended mainly for Year 7 and 8 pupils), Etheridge Hall.



Read more about our Prep School for children aged 7 to 13

We find that the nurturing Prep environment and smaller class sizes build children's confidence



# Years 3 to 6



We nurture independence and establish educational foundations during these key years. We believe children need space to grow and be known as individuals.

With our beautiful grounds and small class sizes (average of 18 per class), pupils thrive with the extensive individual attention they receive and the opportunity to explore their interests and capabilities.

### Nurturing well-rounded pupils with a broad curriculum

In Years 3, 4, 5 and 6, English and Maths are taught every day and are a key focus throughout the three years. Computing, Modern Foreign Languages, Humanities, Science, Music, Art and Drama are taught weekly, and Games or PE is timetabled every day, except for Thursday when a separate activities programme takes place.

In Year 6, Saturday Morning School is introduced, which will continue throughout Years 7 and 8. Designed to enrich the curriculum, Saturday mornings are thematic sessions that we use to develop some of the critical skills pupils will need in later life. Sport is inclusive and children are encouraged to try new things, where their willingness to have a go is celebrated. The main sports are Hockey, Netball and Cricket for girls, and Rugby, Football and Cricket for boys. Pupils also enjoy Swimming in our on-site pool, Athletics, Tennis, Squash and Cross-Country.



With our beautiful grounds and small class sizes (average of 18 per class), pupils thrive with the extensive individual attention they receive



Read more about our Prep School for children aged 7 to 13



# Years 7 to 8

Pupils in our Years 7 and 8 experience a rewarding two years as they increase in self-confidence, develop their intellectual maturity, cultivate leadership skills and take greater responsibility for their learning.

We encourage them in their interests, to try new activities, to develop their sense of self and to become more resilient. Classes of less than 20 ensure pupils have a highly personal learning experience and are working to the best of their ability.

Our broad and unique curriculum, known as the **Encompass Programme**, is taught by specialist teachers in outstanding facilities. Pupils learn three languages, French, German and Spanish, as standard, to ensure they can confidently choose their language option in the future.

Our Discovery Programme runs from 08.50am to 12.15pm and involves an invaluable enrichment programme with themed blocks of learning to develop some of the key skills that pupils need in later life. These include debating, how to research, working together as a team to problem solve and examining some of life's great questions.

### Embracing leadership responsibilities

During the last two years at Prep School, pupils can take on roles of responsibility such as Sports Team Captaincy, Prefects or Heads of School.

Year 8s are expected to accompany visitors on School tours and make conversation with them. This combined with being role models for their younger peers, encourages maturity and independence.

**Our broad and unique curriculum, known as the Encompass Programme, is taught by specialist teachers in outstanding facilities**



Read more about our Prep School for children aged 7 to 13



**Making the move to Senior School, Wycliffe Senior School teachers work alongside their Prep counterparts to ensure that the transition from Year 8 to Year 9 is smooth, as pupils learn a curriculum that seamlessly runs into Year 9.**

We find that the nurturing Prep environment and smaller class sizes build children's confidence so that when they join the Senior School in Year 9, they are self-assured and ready for the move.

Embracing interests and developing a true sense of self, Years 7 and 8 offer the chance for children to grow up more gently and become an adolescent in a safe and trusted environment, without being involved in the social and academic world of young adults and the pressures of exams. Through our value-added educational programme in Drama, Music, Art and activity clubs, pupils can explore their interests and develop new passions. They can take leading roles in plays, choirs, teams, clubs and sporting activities if they desire.



When describing the Senior School, we often use the phrase that we are ‘just the right size’ and that we are big enough to have facilities that are impressive enough to ‘surprise’ some/many and yet small enough for every single pupil to be truly known and valued.

Typically, pupil numbers (Year 9 and above) just exceed 420, with an ‘average’ year-group size being 70-80 pupils. Senior School Day numbers have increased by more than 30% in the past five years (several of whom then also ‘Flexi-board’ a couple of nights each week).

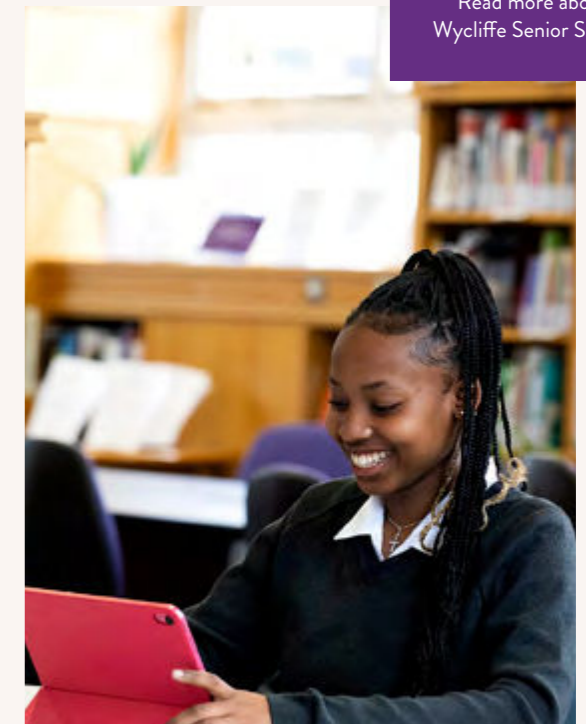
Boarding for Forces families is a very important part of what makes Wycliffe ‘Wycliffe’ and has been especially vibrant of late (with children typically joining in the Prep School and staying on through to A Levels).

In the Senior School, pupils can choose from an exceptionally broad and wide-ranging curriculum offer, comprising 20 options at GCSE and 28 in the Sixth Form, including three BTECs/CTECs (Business; Sport; Digital Media).

The College has an excellent reputation for supporting pupils with Special Educational Needs and holds CReSTeD accreditation. In addition, the Wycliffe experience is more than what happens in the classroom: with more than 60 activities running every week of the year, pupils can stretch their ‘pioneering spirit’. Whether it is on stage, in the Choir, on the sports field, up a mountain or on a river, Wycliffe aims to allow every pupil to pursue an interest outside of the classroom.



Read more about  
Wycliffe Senior School



Both the CCF and the Duke of Edinburgh Award scheme are very strong. The College’s wonderful sports facilities include a floodlit astroturf, Squash courts, a modern purpose-built sports hall with two full-sized Basketball/Netball courts, Rugby and Cricket pitches, Tennis courts, a Boat Club for Rowing (some 15 minutes away at Saul Junction), a swimming pool (located at the Prep School) and a fully equipped gym.

Our value-added is one of the best in the country. This is supported by constant and robust monitoring, tracking and assessment, meaning that pupils’ attainment is being continuously reviewed and strategies implemented to help them succeed.



“Pupils value and respect cultural diversity, which they experience on a daily basis given the School’s International community”

ISI Inspection team

“

Pupils are supported in making choices to maximise their learning and development through the synergy between academic and pastoral structures in the School, and the sense of belonging to their House, whether as a Boarder or Day pupil

ISI Inspection team

”



“

Pupils demonstrate excellent self-knowledge, self-discipline, self-esteem and resilience”

ISI Inspection team

# Years 9 to 11

Year 9 is a bridge between pupils' prior learning and the GCSE syllabuses that end in public examinations in Year 11. In Year 9, we offer all subjects to all pupils and then ask them, with parental support and our guidance, to choose the subjects that they will take for GCSE.

An event is held on the Friday afternoon before January each year to help with this process. At this event, parents can speak to subject leaders of the GCSE options, and pupils already taking the subjects. Internal exams towards the end of Year 9 serve as a progress check, and to help prepare pupils for the style of assessment that awaits in GCSEs.

Years 10 and 11 are the GCSE years where pupils study from a choice of subjects for the first time in their education. There are five compulsory (core) subjects: English Literature, English Language, Mathematics, along with a dual-award GCSE in Physics, Chemistry and Biology, plus five optional subjects. GCSE courses last two years and lead to qualifications that are internationally recognised. The GCSE timetable is tailored to the choices of our pupils, to support individual learning needs.

If you are an International pupil, and you are joining us in Year 11, it is most likely that you would join our Development Year/Pre-A Level Programme. You can read about this later in this guide.

## GCSE Option Process

- 1. The options process begins**  
In January, the Deputy Head, Academic, the Head of Lower School and the Careers Manager explain the options process to Year 9 pupils.
- 2. Time to think**  
Pupils have time to think about their GCSE choices in their Life Skills and tutor periods. We also host a GCSE Options Day in January. They may speak to their personal tutor, heads of department or any other teachers about questions they may have.
- 3. The Careers Team**  
The Careers Team helps pupils understand what is expected in certain careers, explore new career pathways and to investigate what career may suit their interests, personality and aspirations.
- 4. Make a decision**  
By the Easter Holiday, each Year 9 pupil submits their choices of GCSE subjects. If a pupil changes their mind about a subject, they would need to speak to the Head of Lower School.



All pupils taking GCSEs take five core subjects. Pupils then select five optional GCSE subjects to study – at least one of which must be a Modern Foreign Language. The following table shows how much of each subject at GCSE is assessed by exam or coursework.



## Core Examined Subjects

The following subjects are studied by all pupils:



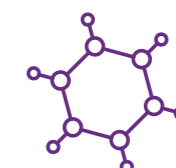
English Language



English Literature



Mathematics



Science  
(Double Award)

Years 9 to 11



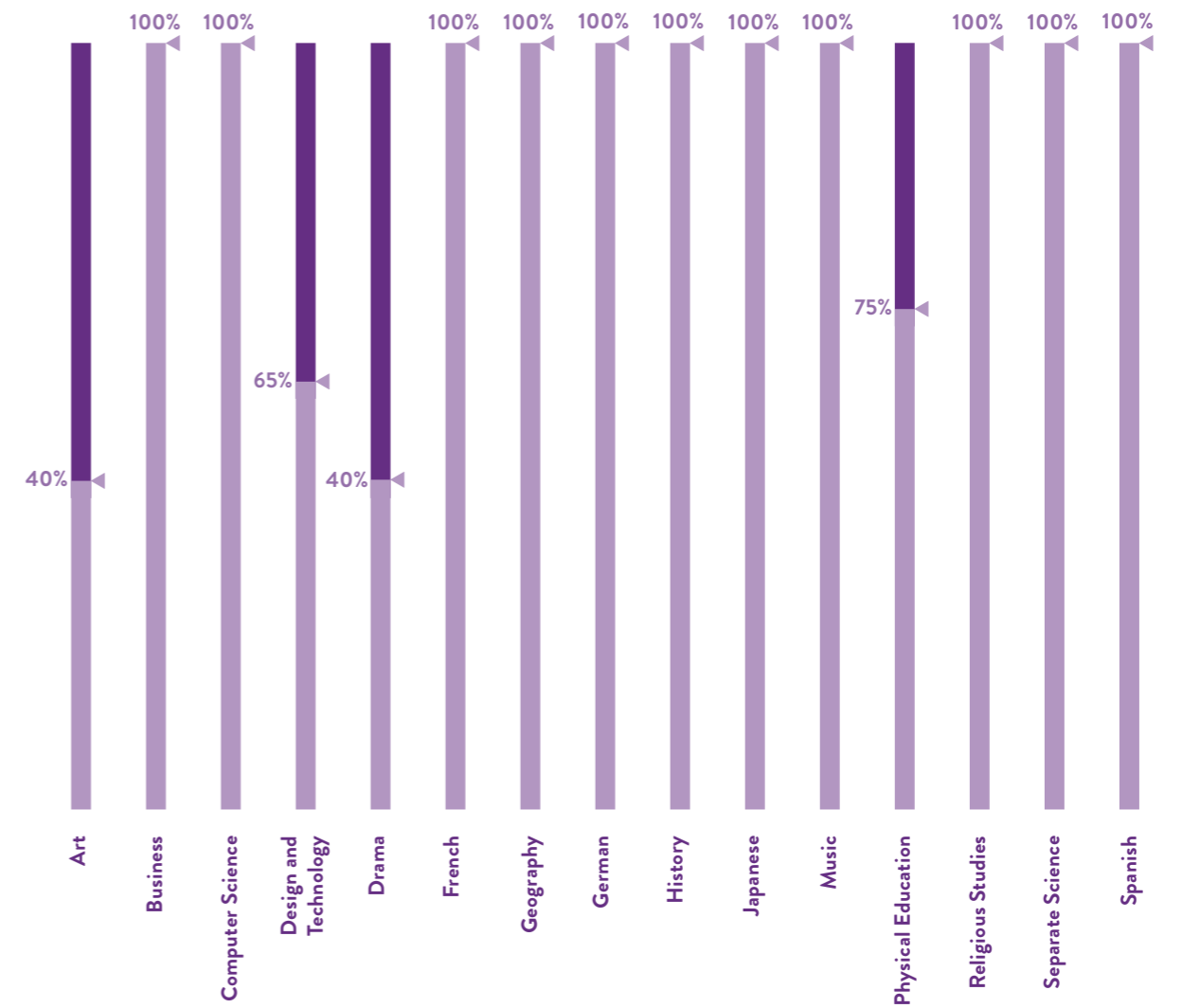
Years 10 and 11 are the GCSE years where pupils study from a choice of subjects for the first time in their education



Optional Subjects

Each pupil needs to choose five subjects from the optional list below

Coursework Mix:  
Exam Coursework



Non-Examined Subjects: • Life Skills • Physical Education • Games • Literacy

“ Pupils express appreciation of the School encouraging them to set challenging targets for themselves and giving them a framework for improvement through the use of the School’s published criteria for Learning Engagement ”

ISI Inspection team

# Pre-A Level Development

The Pre-A Level Development Year (DY) has been designed mainly for International pupils wishing to study at A Level who need to complete GCSEs and potentially improve their level of English.

We have a maximum of 36 pupils on this programme, split into various groups depending on academic level and level of English. Whilst lessons are taught as a discrete group, all other aspects of School life are integrated with other pupils, including House allocation, games and extra-curricular activities.

Wycliffe has been running the Development Year programme (and the International pupils' Pre-Sessional Week) for over 20 years. With our deep-rooted experience and expertise to make it work effectively (especially through our excellence in teaching English to non-native speakers), Wycliffe's DY programme remains one of the best in the UK.

Development Year pupils have around 30-34 lessons per week of 45 minutes each. Each pupil's timetable is set during the Pre-Sessional Week according to several criteria, including prior knowledge and/or aptitude, study and career plans (including home country requirements where the pupil is aware of these), timetabling limitations and pupil preferences.

The programme is designed in such a way that some subjects lead to GCSE, IGCSE or EAL exams and some are non-examined. DY pupils will normally take at least five GCSEs, including one in their own mother tongue and an English IGCSE.



## What you will study

The Pre-A Level Development Year runs prior to the final two years of school in the UK, which are Years 12 and 13. The parallel year for UK pupils is Year 11, which is the second half of their two-year GCSE course in around nine subjects. We ensure that International pupils joining the English education system take the core subjects at GCSE, enabling them to move onto A Levels / further education in their homeland. The Development Year programme is designed in such a way that some subjects lead to GCSE, IGCSE or EAL exams, and some are non-examined. Development Year pupils will take at least five GCSEs, including one in their own mother tongue and an English IGCSE.

### All pupils take the following subjects:

- English – first and/or second language GCSE or IGCSE
- Mathematics – GCSE or IGCSE
- Combined Science OR Biology – GCSE or IGCSE
- One Modern Foreign Language – GCSE or IGCSE (Japanese / Spanish / French / German)
- Untaught own language – GCSE or IGCSE (where available)
- Cambridge English Exams
- Trinity Speaking Exams

Some pupils, dependent on ability, can take the following additional GCSE subjects. There will be examinations for these.

- Economics – GCSE or IGCSE
- Further Mathematics – Level 2
- Statistics – GCSE or IGCSE

There are a range A Level subjects which DY pupils can also take. These are non-examined. Pupils take Life Skills, Business Studies and Economics, and Geography throughout the year.

In the Autumn Term (Term 1), pupils can take two to four additional non-examined subjects. In January, pupils again can choose two to four subjects.

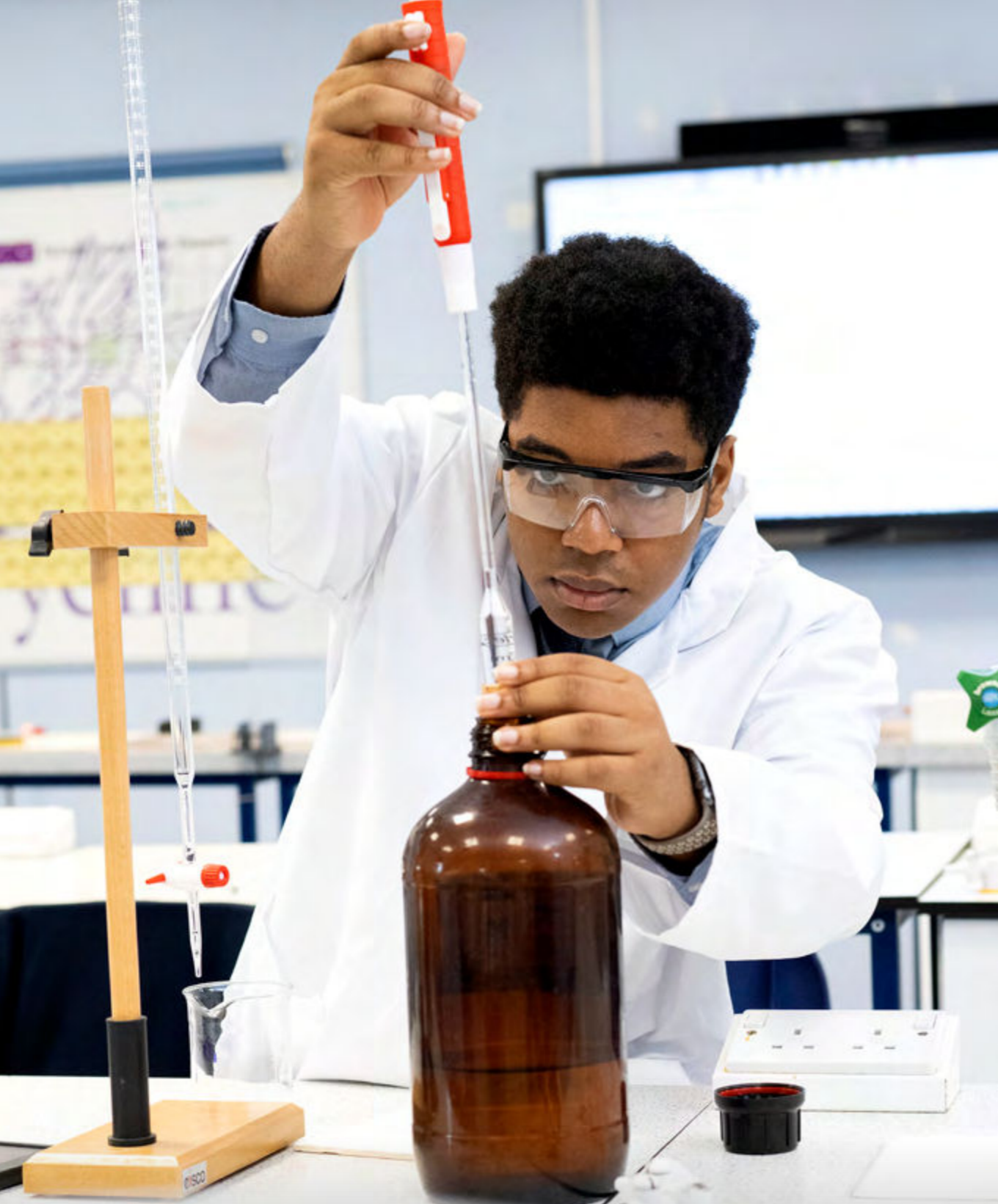
- Life Skills (with UK pupils)
- Business Studies and Economics
- Computer Science
- Fine Art
- Photography
- Design and Technology
- Drama
- Geography
- History
- Media Studies
- Music
- Psychology

The Pre-A Level Development Year (DY) has been designed mainly for International pupils



Read more about our Pre-A Level Development





# Sixth Form

## There is a wide range of Sixth Form subject options for Years 12 and 13 at Wycliffe

With a choice of 29 A Levels, three BTECs/CTECs in Digital Production, Sport and Business, along with the Extended Project Qualification, our subject option blocks are created around your options to offer greater freedom and to ensure you can choose the subjects that you'll excel in. This, combined with our Learning Support Department and Gifted and Talented Programme, ensures genuine, individualised learning for each pupil.

Most of our Sixth Form pupils go on to Higher Education, studying at a range of prestigious universities worldwide.

Our Careers Team mentor each pupil with their onward plans. In Year 12, pupils gain a comprehensive understanding of Higher Education through our programme of lectures and guest speakers. At the Futures Fair, pupils meet top UK and overseas universities, apprenticeship providers and employers.

The Year 12 Aspire project encourages pupils to reflect on who they are and research a future objective. These experiences help to support individual's choices and broaden pupils' horizons. The Curriculum Enrichment Programme includes regular lectures, presentations and workshops from external speakers. These opportunities enable pupils to develop a wide range of skills, from sharpening revision techniques to helping them set and achieve personal goals.

The Scholars' Society Programme gives enhanced learning opportunities to our Scholars. To support pupils who are looking to apply to the most popular courses or the most competitive universities, our Competitive Courses Co-ordinator advises on applications and choices.



Read more about Wycliffe Sixth Form



### Universities in America and other overseas universities

The PSAT, SAT and ACT testing systems are rarely permitted outside the USA and very few places in the UK are authorised to run them. Wycliffe is among the elite, and since 2013 we have had a specialist USA and Overseas University Applications Co-ordinator. Wycliffe is one of only a few host centres for the tests in Wales and South West England. Wycliffe can support US university applicants with SAT and ACT preparation courses, essay writing and differences in application types.

Our pupils have been able to obtain offers at highly prestigious universities and have even received very generous scholarships and financial aid packages to further their studies.



# The Careers Department

The Careers Department offers individual careers guidance to all Development Year pupils, including post-16 and post-18 options.

There is a comprehensive Careers Library and a range of computer-based university research resources. In the Autumn Term, all Development Year pupils receive an individual mock interview with a local employer. There are also events held at Wycliffe, which are attended by universities and major employers, which offer pupils a chance to find out more directly.

We also have teachers who assist those applying for highly competitive courses and a member of staff who facilitates International university applications and the sitting of SAT exams on-site at Wycliffe.



*Write your own story...*

## Year 11 Mock Interviews

Pupils use their career management table to complete an application form promoting their USP prior to an interview with business professionals.

## Career Portfolio

All pupils use their career portfolios to guide their exploration of their passions, interests and skills to discover clues to future possibilities and build career management.

## Resources

Pupils have access to eclipse and Xello to help them research their career ideas and build their personal career management table.



## Gifted and Talented

We are a member of the **National Association for Gifted Children (NAGC)** – now known as Potential Plus. NAGC supports our staff development opportunities to help us maintain our high standards in educating our pupils. The Gifted and Talented Programme for our most academically able pupils gives opportunities for curriculum enrichment and extension, but also challenges to stretch their learning.

The Gifted and Talented Programme for our most academically able pupils gives opportunities for curriculum enrichment and extension



Read more about the Careers Department





# Life Skills

## Inspiring young minds



Wycliffe's bespoke Life Skills programme is designed to give our pupils excellent preparation for the world and has been highly praised by external inspectors on two recent visits.

Our programme includes careers, relationship education, mental and emotional wellbeing, financial, global and political awareness, and practical skills, such as cooking, ironing and how to change a car tyre.

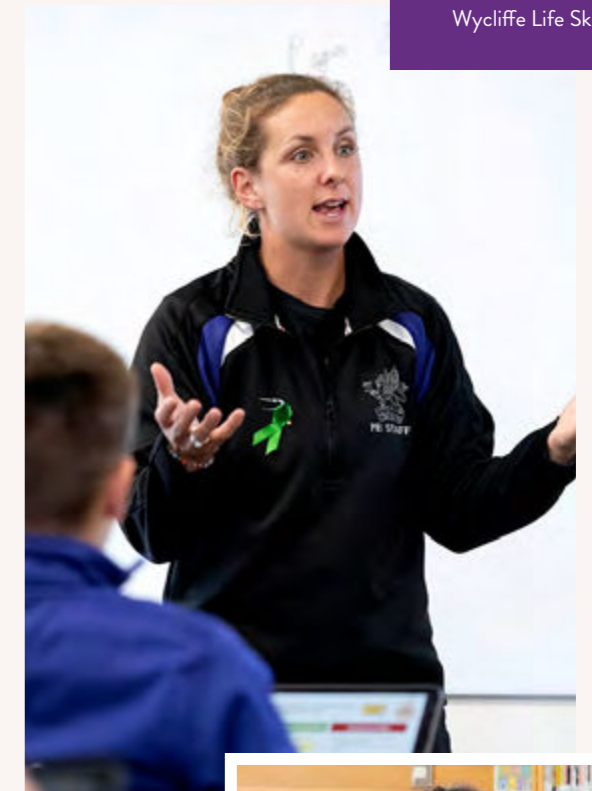
During the GCSE years, an important aspect is how to study effectively and our syllabus, supported by the tutorial system, ensures that learning how to study and revise properly are central to what we do.

Games and sporting opportunities for all pupils are provided at every level throughout the College. Excellent facilities combined with specialist coaching, a competitive fixtures list, including local, district and national tournaments provide pupils with the opportunity to enjoy being part of a team and, through our Gifted and Talented Programme, to perform at the top of their chosen sport. Boys' games focus on Rugby, Football and Cricket while the girls play Hockey, Netball, Rounders and Tennis.

There is an enormous range of other sports including Rowing, Fencing, Basketball and Equestrian. An elite Squash Academy caters for aspiring Squash players.

Computer Science and Digital Literacy Computer Science is a core subject in Year 9, in addition to the GCSE option in Year 10 where this is available as a separate specialist subject. Pupils hoping to take Computer Science for GCSE will be well prepared through this core programme of study. There is an emphasis on 'computational thinking' as it influences various fields and allows us to solve problems, design systems and understand the power and limits of human and machine intelligence.

Pupils continue to learn and improve their Digital Literacy Skills (including online safety and digital citizenship), which is delivered as part of a carousel of core Life Skills lessons in Years 10 and 11.



## Learning Support

**Our experience shows that with appropriate teaching, support and resources, pupils with dyslexia and other special educational needs gain the confidence to achieve superbly well.**

In recognition of our provision for pupils with specific learning difficulties, Wycliffe has been accredited by **CReSTeD – (Learning Support Centre category)**, for the past 12 years. The designated Learning Support team has highly experienced, specialist teachers who offer individual tuition to those pupils who need support to develop their skills.

# Scholarships



Read more or to apply for Wycliffe Scholarships



Scholarships are awarded to the best applicants in their fields. Wycliffe Scholars benefit from a proportionate discount off the fees, and the kudos of being recognised and celebrated for their ability, and from various programmes to support their time at Wycliffe. A successful Scholar will be a leader in their chosen field of expertise and a good role model during their time at Wycliffe.

Special arrangements are made if you are unable to attend the Scholarship assessment in person. Scholarships are held for the duration of a pupil's time in the Senior School, provided their conduct is satisfactory and their level of work and commitment is in line with the expectations of a Scholar.



## 13+ (Year 9) Scholarships

**13+ (Year 9) Scholarship Assessments take place over one week in January.**

Applicants take part in the Scholarship Assessments when they are in Year 8. Pupils can apply for more than one Scholarship. Notification if an applicant has been successful or not is sent by email within a few days at the end of the Scholarship Assessment week.

13+ Scholarships (taken in Year 8 for entry into Year 9) are a recognition of achievements and an appreciation of potential. Wycliffe 13+ Scholarships are awarded for:

- Academic Excellence
- Art
- Design Technology
- Drama
- Music
- Sport

## 16+ (Sixth Form) Scholarships

**16+ (Sixth Form) Scholarship Assessments are in the October and March of an academic year.**

However, application and assessment for a Sport Scholarship is only available in the October. Year 11 or Development Year pupils may apply for a Scholarship in one of the Scholarship Assessments or both; and they may also apply for more than one Scholarship.

16+ (Sixth Form Scholarships) are a recognition of excellence and commitment. Wycliffe Sixth Form Scholarships are awarded for:

- Academic Excellence
- All-Rounder
- Art
- Design and Technology
- Drama
- Modern Languages
- Music
- Sport

# Application Process

We always welcome an informal discussion about what the College can offer and how we can meet your needs. An informal discussion enables you to ask questions and for us to get to know you better.



*Write your own story...*

## Joining Wycliffe

Our Admissions process is simple, whilst still being robust, thorough and fair.

We work on the basis that each application is highly individual and therefore we treat each one as such. We accept applications at any point in the academic year.



### Five Steps to Joining Wycliffe

1. Come and see Wycliffe – at an Open Morning or book a tour, either in person or virtually.
2. Complete and send the Registration Form and pay the Registration Fee.
3. Send copies of your child's two most recent school reports (for those who require additional support, please send your child's most recent Educational Psychologist's report).
4. Sit the online Cognitive Abilities Test assessment.
5. Wycliffe will inform you of the decision regarding an Offer of Place.



## Meet the Team

There are various members of the team that you should know a little more about! Scan the QR code to find out more.

We would love to welcome you to the College for an informal discussion about what we offer you. Please contact our Admissions Team to arrange your personal visit.





Wycliffe

wycliffe.co.uk

## Contacts for Admissions

Please get in touch to arrange your personal visit:

**Prep School (3 to 13 years)**

E: [Prep admissions@wycliffe.co.uk](mailto:Prep admissions@wycliffe.co.uk)

T: +44 (0) 1453 820471

**Senior School (13 to 19 years)**

E: [admissions@wycliffe.co.uk](mailto:admissions@wycliffe.co.uk)

T: +44 (0) 1453 820412